

# THLCDC

**for 9"-21" LCD monitors  
with 100mm VESA patterns**

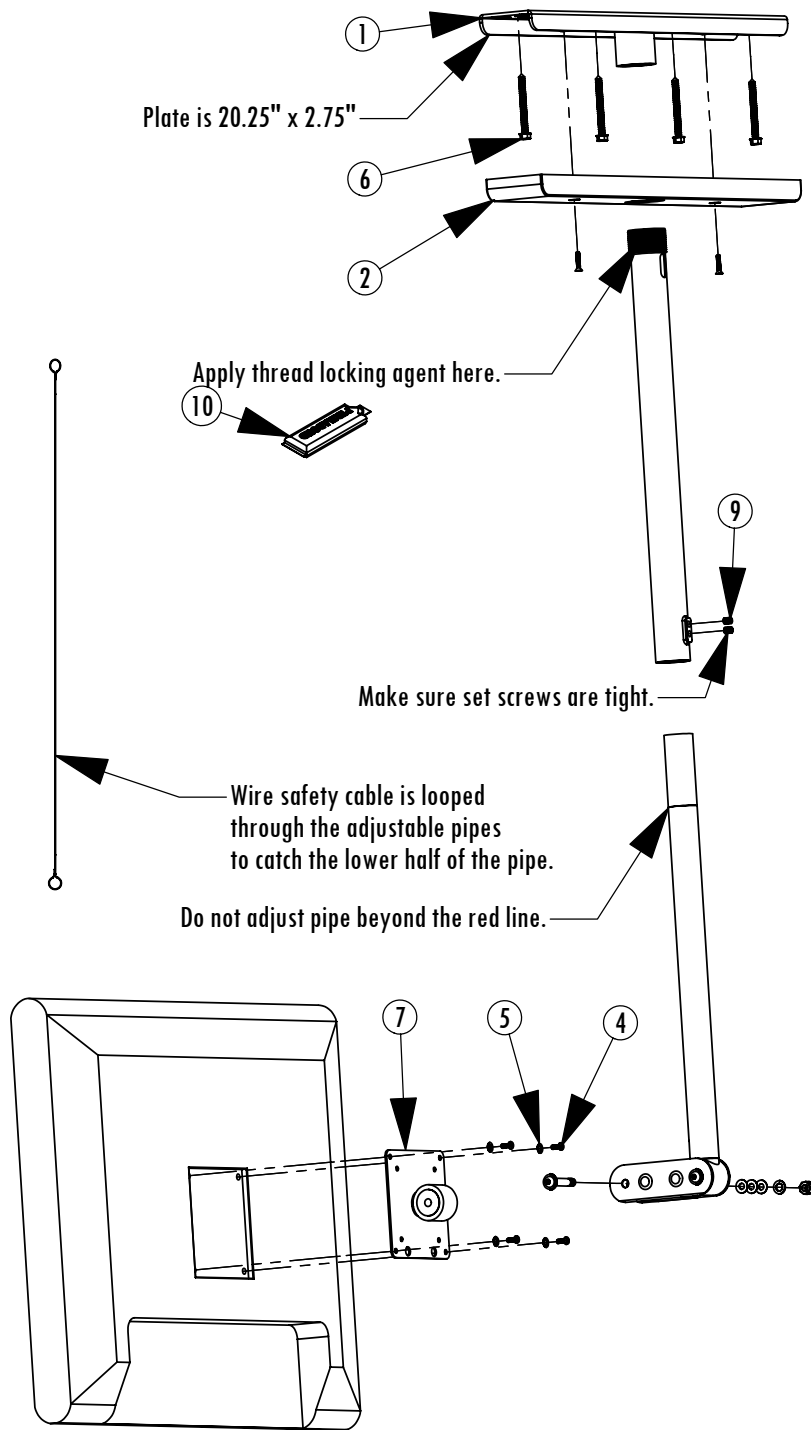


Plate is 20.25" x 2.75"

Apply thread locking agent here.

Make sure set screws are tight.

Wire safety cable is looped through the adjustable pipes to catch the lower half of the pipe.

Do not adjust pipe beyond the red line.

4Pcs 4mm x 12mm Phillips Screws  
Caution! Do not use with model #s  
PDI-P20LCDC or LD-20A6UD

Attach the LCD adapter (#7) to the monitor with screws appropriate for your monitor. Use M4 x 10mm (#4) x .7P Screws and 5mm Flat Washers (#5) for model #s: PDI-P20LCDC or LD-20A6UD.

M4 x 12mm x .7P (#3) are provided for Philips model monitors.

Predetermine the best possible viewing location for the monitor allowing for tilt and pivot action.

Use the Ceiling Flange (#1) as a template to mark and drill pilot holes 2-1/2" deep into the wood ceiling joist using a 1/8" bit for each of the lag screw locations.

Attach the Ceiling Flange to the ceiling wood joist using the provided Lag Screws (#6). If mounting into concrete, metal beams or at an angle, contact Lucasey for ceiling mount accessories compatible with this mount.

Attach the Ceiling Flange Cover (#2) to the Ceiling Flange using the provided Flat Head Screws (#8).

Carefully slide the Inside Pipe into the Outside Pipe. Adjust to the appropriate length (Do not adjust past the red line) and tighten the Setscrews (#9).

If desired, run the monitor cords through the pipes using the Cord Access Hole at the top and the hole in the bottom of the Inside Adjustable Pipe.

Apply Thread Locking Agent (#10) to the pipe threads. and screw the Outside Pipe into the Ceiling Flange.

Double check to make sure all fasteners, including the adjustable pipe setscrews, are secure and tight.

| ITEM NO. | DESCRIPTION                             | Qty. |
|----------|---|------|
| 1        | Ceiling Flange with 1" I.D. Coupling    | 1    |
| 2        | Ceiling Flange Cover                    | 1    |
| 3        | M4 x 12mm 0.7P MACHINE SCREWS           | 4    |
| 4        | M4 x 10mm 0.7P MACHINE SCREWS           | 4    |
| 5        | 5mm Flat Washer                         | 4    |
| 6        | #14 x 2-1/2" LAG SCREWS                 | 4    |
| 7        | LCD ADAPTER PLATE W/ KNUCKLE            | 1    |
| 8        | #10-32 x 3/4" Phillips Flat Head Screws | 2    |
| 9        | 1/4-28 x 5/16" Setscrews                | 2    |
| 10       | PermaBond HM128 Thread Locking Agent    | 1    |

**Must use 10mm screws on 20" model #s PDI-P20lcDC and LD-20A76UD**